

The White Poplar

 3 BEDROOMS  3 BATHROOMS  1,443 FT²

The White Poplar is a fabulous 3 en suite bedroom detached home with integral garage.

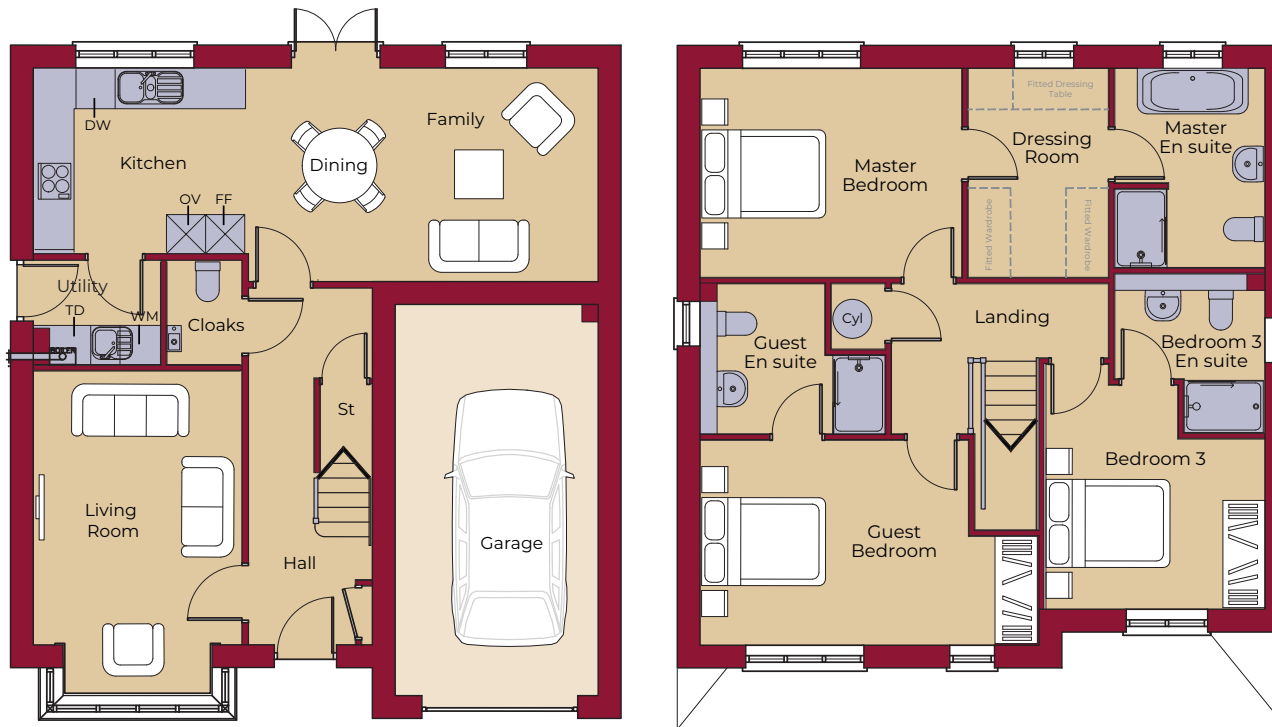
The ground floor accommodation comprises of a lounge with feature bay window, a kitchen / family room with French doors onto the garden, a utility room with space for a washer and dryer, and a cloakroom.

Upstairs the property offers a superb master suite with walk through dressing room fitted with Hammonds wardrobes and en suite fitted with both a bath and shower. There are two further en suite bedrooms to complete the home.



The White Poplar

3 BEDROOMS 3 BATHROOMS 1,443 FT²



DOWNSTAIRS

LIVING ROOM	4950mm (max) x 3150mm 16' 3" (max) x 10' 4"
KITCHEN	3235mm x 2800mm 10' 7" x 9' 2"
FAMILY / DINING	5325mm x 3225mm 17' 6" x 10' 7"
UTILITY	1925mm (max) x 1570mm 6' 4" (max) x 5' 2"
GARAGE	5950mm x 3060mm 19' 6" x 10' 0"

UPSTAIRS

MASTER BEDROOM	3985mm x 3180mm 13' 1" x 10' 5"
MASTER DRESSING ROOM	3180mm (inc. 'robes) x 2150mm (inc. 'robes) / 9' 11" x 7' 5"
MASTER EN SUITE	3030mm x 2270mm 9' 11" x 7' 5"
GUEST BEDROOM	5160mm (max) x 3515mm 16' 11" (max) x 11' 6"
GUEST EN SUITE	2810mm (max) x 2285mm 9' 3" (max) x 7' 6"
BEDROOM 3	3730mm (max) x 3350mm 12' 3" (max) x 11' 0"
BEDROOM 3 EN SUITE	2270mm x 2430mm (max) 7' 5" x 8' 0" (max)

KEY



Hob

OV Oven

FF Fridge / Freezer

DW Dishwasher

WM Washing Machine Space

TD Tumble Dryer Space

St Store